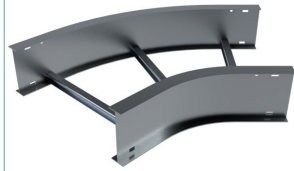


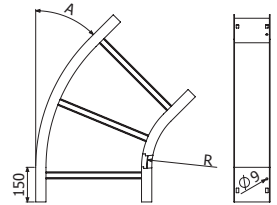
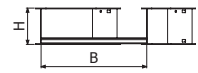


CPI H6



CPI 'A' - 'R' 'B'x'H'

	A (°)	R		B		H		AL	
		inch	mm	inch	mm	inch	mm	REF	Kg/ud
CPI30-12 9X6	30	12	300	9	230	6	150	2/10593	1,83
CPI30-12 12X6	30	12	300	12	300	6	150	2/10594	1,96
CPI30-12 18X6	30	12	300	18	450	6	150	2/10595	2,22
CPI30-12 24X6	30	12	300	24	600	6	150	2/10596	2,76
CPI30-12 30X6	30	12	300	30	750	6	150	2/10597	3,09
CPI30-12 36X6	30	12	300	36	900	6	150	2/10598	3,42
CPI45-12 9X6	45	12	300	9	230	6	150	2/10599	2,17
CPI45-12 12X6	45	12	300	12	300	6	150	2/10600	2,47
CPI45-12 18X6	45	12	300	18	450	6	150	2/10601	2,86
CPI45-12 24X6	45	12	300	24	600	6	150	2/10602	3,25
CPI45-12 30X6	45	12	300	30	750	6	150	2/10603	3,64
CPI45-12 36X6	45	12	300	36	900	6	150	2/10604	4,45
CPI90-12 9X6	90	12	300	9	230	6	150	2/10605	3,29
CPI90-12 12X6	90	12	300	12	300	6	150	2/10606	3,72
CPI90-12 18X6	90	12	300	18	450	6	150	2/10607	4,37
CPI90-12 24X6	90	12	300	24	600	6	150	2/10608	5,28
CPI90-12 30X6	90	12	300	30	750	6	150	2/10609	6,00
CPI90-12 36X6	90	12	300	36	900	6	150	2/10610	7,12
CPI30-24 9X6	30	24	600	9	230	6	150	2/10611	2,33
CPI30-24 12X6	30	24	600	12	300	6	150	2/10612	2,59
CPI30-24 18X6	30	24	600	18	450	6	150	2/10613	2,92
CPI30-24 24X6	30	24	600	24	600	6	150	2/10614	3,25
CPI30-24 30X6	30	24	600	30	750	6	150	2/10615	3,58
CPI30-24 36X6	30	24	600	36	900	6	150	2/10616	3,91
CPI45-24 9X6	45	24	600	9	230	6	150	2/10617	3,02
CPI45-24 12X6	45	24	600	12	300	6	150	2/10618	3,21
CPI45-24 18X6	45	24	600	18	450	6	150	2/10619	3,60
CPI45-24 24X6	45	24	600	24	600	6	150	2/10620	4,27
CPI45-24 30X6	45	24	600	30	750	6	150	2/10621	4,73
CPI45-24 36X6	45	24	600	36	900	6	150	2/10622	5,19
CPI90-24 9X6	90	24	600	9	230	6	150	2/10623	4,88
CPI90-24 12X6	90	24	600	12	300	6	150	2/10624	5,34
CPI90-24 18X6	90	24	600	18	450	6	150	2/10625	6,06
CPI90-24 24X6	90	24	600	24	600	6	150	2/10626	7,04
CPI90-24 30X6	90	24	600	30	750	6	150	2/10627	7,83
CPI90-24 36X6	90	24	600	36	900	6	150	2/10628	9,02
CPI30-36 9X6	30	36	900	9	230	6	150	2/10629	2,92
CPI30-36 12X6	30	36	900	12	300	6	150	2/10630	3,09
CPI30-36 18X6	30	36	900	18	450	6	150	2/10631	3,42
CPI30-36 24X6	30	36	900	24	600	6	150	2/10632	3,75
CPI30-36 30X6	30	36	900	30	750	6	150	2/10633	4,08
CPI30-36 36X6	30	36	900	36	900	6	150	2/10634	4,82
CPI45-36 9X6	45	36	900	9	230	6	150	2/10635	3,76
CPI45-36 12X6	45	36	900	12	300	6	150	2/10636	4,09
CPI45-36 18X6	45	36	900	18	450	6	150	2/10637	4,55
CPI45-36 24X6	45	36	900	24	600	6	150	2/10638	5,01
CPI45-36 30X6	45	36	900	30	750	6	150	2/10639	5,47
CPI45-36 36X6	45	36	900	36	900	6	150	2/10640	6,34
CPI90-36 9X6	90	36	900	9	230	6	150	2/10641	6,47
CPI90-36 12X6	90	36	900	12	300	6	150	2/10642	6,96
CPI90-36 18X6	90	36	900	18	450	6	150	2/10643	7,75
CPI90-36 24X6	90	36	900	24	600	6	150	2/10644	8,80
CPI90-36 30X6	90	36	900	30	750	6	150	2/10645	9,65
CPI90-36 36X6	90	36	900	36	900	6	150	2/10646	10,92



CPI 'A' - 'R' 'B'x'H'

2 x JUI 6 (2/11222)

